



Installation of USB Modem Driver

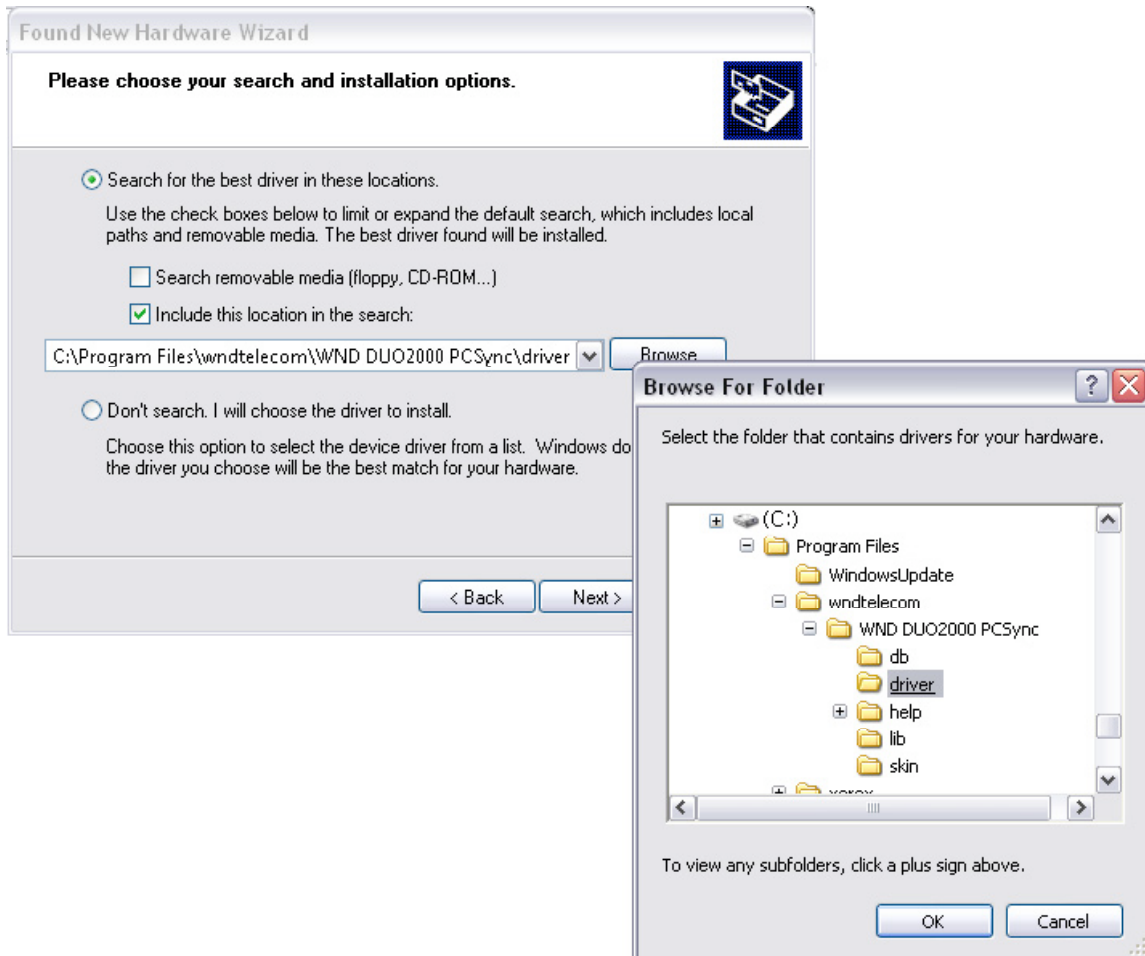
DUO2000

Installation of USB Modem Driver

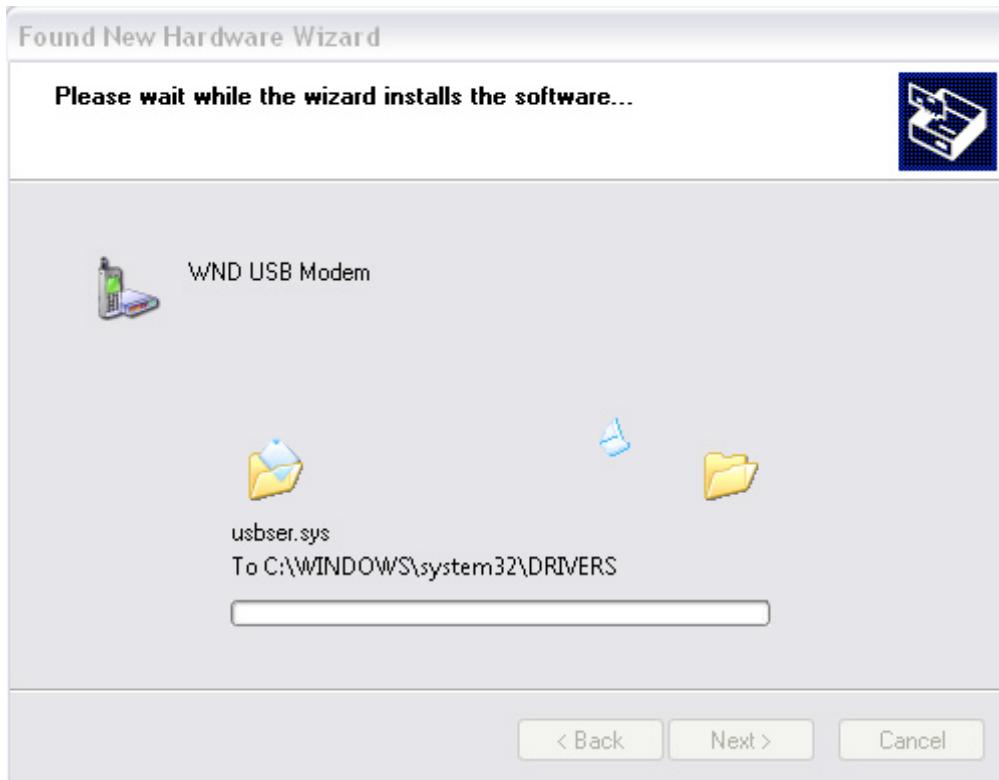
1. Connect Duo2000 with your PC and you will see automatically popped-up window shown in the photo below. As indicated in the photo below, select 'install from a list or specific location' and click 'next' to continue installation.



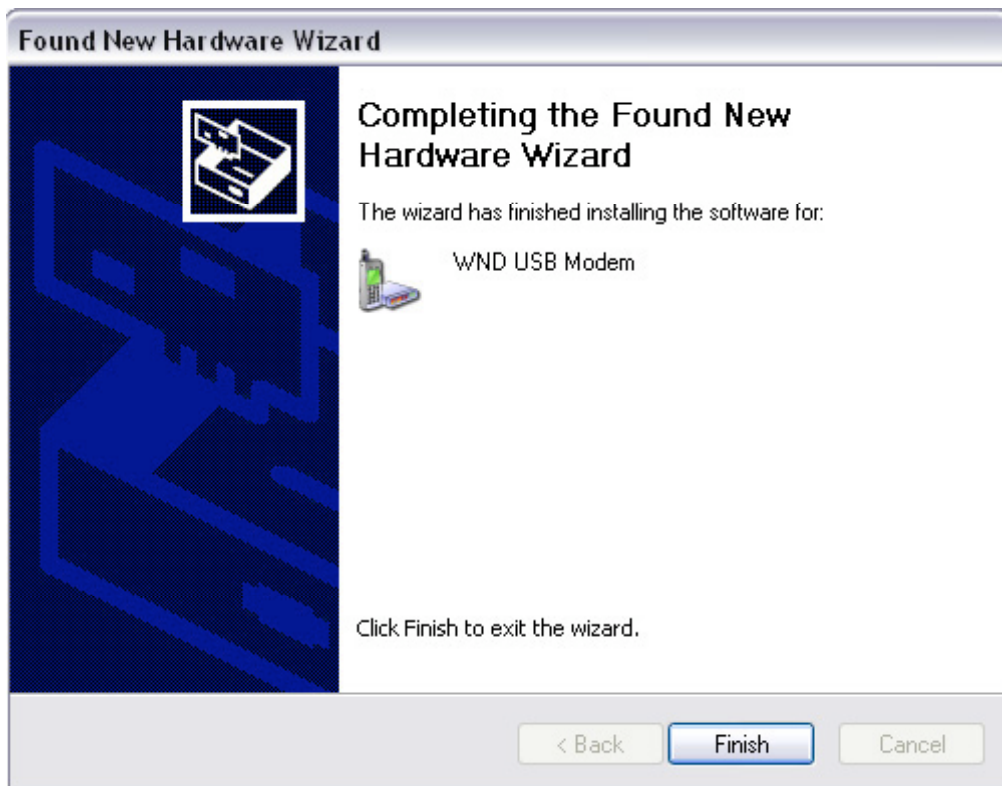
2. Select 'include this location in the search' and click 'browse' to select the location 'C:\program files\wndtelecom\WND Duo2000 PCSync\driver' in the window as shown in the picture below, and click 'next'



3. Wait while the installation wizard installs WND USB Modem.



4. Click 'finish' to complete installation.



5. To make sure that WND USB Modem is successfully installed in your computer, click 'start' and open 'control panel' and double click 'system' icon.

Select 'Hardware' tab and click 'device manager' and if you can see 'WND USB Modem' under 'Modems' category, your WND USB Modem is successfully installed and ready for use.

